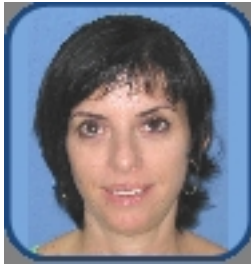


Birth Pathway - YOUR PERSONAL PRENATAL CARE PLAN



Birth Pathway Director:

Mrs. Prina Rosenwasser

Each year more than 7000 babies make their entrance into the world through Laniado Hospital's Birth Pathway. With all the medical and support services relating to pregnancy and childbirth concentrated under one roof, Birth Pathway is designed to give expectant couples an anxiety-free and exciting pregnancy and childbirth experience in a warm, supportive environment that is tailored to your individual needs and wishes.

Our expert staff of certified obstetricians, pediatricians, anesthesiologists, nurses, midwives, and doulas believes in total care for the mother, baby and family. Therefore we provide all possible tools and services to make childbirth a joyful and memorable experience for the whole family.

Luxurious, spacious birthing suites combine the atmosphere of home birth with hospital technology. Equipped with a variety of birth aids and amenities such as relaxing oils and soft music, (is this necessary) they will give you the ultimate pampering experience.

What does Birth Pathways encompass?



The Birth Space Monitor is a device that monitors a patient's vital signs during labor and delivery. It is used to detect any changes in the patient's vital signs that may indicate a complication. The device is used in a variety of settings, including labor and delivery rooms and natural birthing centers.

CARE PLAN - A care plan is a document that outlines the care that a patient will receive during their stay in the hospital. It is developed by the healthcare team and is used to guide the patient's care. The care plan includes information about the patient's medical history, current condition, and the goals of care. It also includes information about the patient's preferences and the care that they want to receive. The care plan is updated as the patient's condition changes and as the healthcare team's understanding of the patient's needs evolves.
